

Elko BLM Emergency Stabilization & Rehabilitation (ESR)



MARTIN FIRE

Started:

7/5/2018

Fire Size:

435,569 acres

***EKD 207,298 acres**

Containment:

100%

Cause:

Human

Cooperators

Bureau of Indian Affairs

USDA Forest Service

Elko County

Elko District BLM

Elko Sherriff's Office

Humboldt County

Humboldt Sheriff's Office

Nevada BLM

Nevada Department of Wildlife

Nevada Division of Forestry

Paiute Pipeline

Shoshone Paiute Tribe

Winnemucca District BLM

Agenda: 8/29/2018

*7:00 a.m.—Depart Elko Red Lion

*Stop at West IL

*Four Mile Butte in Four Mile Pasture

*North to Desert Ranch Reservoir

*Unburned islands inside perimeter

* If time permits, stop at Winters

* Return back to Elko BLM around 5:00 p.m.



The Martin fire was reported around 12:25 a.m. on July 5, 2018 about 4 miles northeast of Paradise Valley, NV.

The fire grew rapidly due to dense, dry fuels, inaccessible terrain and gusty downslope winds, threatening numerous homes and structures overnight. The hot, extremely dry and windy conditions fanned the flames with the fire growing to over 22,000 acres by 5:00 p.m. and posed threats to the Paiute Pipeline that runs through the area. Rapid growth continued for days due to weather.



At 6:00 a.m. on July 7, Taiga Rohrer's Great Basin Type 2 Incident Management Team assumed command of the fire.

Due to the size, complexity and potential for additional large fire movement, it was divided into two zones in order to more effectively control it. At 6:00 a.m. on July 10, Beth Lund's Type I Great Basin Management Team #1 assumed control of the eastern zone of the fire. Taiga Rohrer's Type II Great Basin Management Team continued to manage suppression efforts on the west side from their Incident Command Post in Paradise Valley.

Closures:

- Wilson campground and reservoir (HWY 226) closed to the public due fire suppression activities on July 10 for public safety.
- A pair of CL-145 “Super Scooper” fixed wing water tankers “scooped” at the location.
- On July 13, the Wilson reservoir and campground opened back up to the public.

Evacuations:

- None

Fire History:

- Reported on July 5, around 12:25 a.m. about 4 miles northeast of Paradise Valley, NV on BLM lands adjacent to private land.
- Rapid growth fueled by hot, dry, and windy conditions resulted in over 22,000 acres burned.
- July 5, a Type 2 Incident Management Team was ordered.
- July 6, extreme fire behavior continued as additional resources are ordered.
- July 7, Taiga Rohrer’s Great Basin Type 2 Incident Management Team assumed command of the fire with roughly 164,972 acres burned and 2% containment. Day and night operations begin to help suppress the fire.
- July 8, extreme fire behavior continued with 330,000 acres burned with 8% containment. A Type 1 Incident Management Team began mobilizing.
- July 9, 425,000 acres burned with 35% containment.
- July 10, due to size, complexity and probability for large fire growth, Beth Lund’s Type 1 Great Basin Management Team #1 assumed command of the eastern zone, while Rohrer’s Type II Incident Management Team managed the west side.
- Resource management specialists started assessing environmental and resource damage caused by the wildfire and suppression activities.
- July 11, community meetings were held for both the east and west zones as fire managers continued progress securing containment lines as weather, fuel, and terrain aided in suppression effectiveness.
- July 12, interior fuels burned while suppression repair and mop up began, with an estimated fire perimeter of 296 miles long.
- July 13, crews patrolled for hot spots and mopped up along the fire perimeter. Suppression repair continued in both zones.



- July 14, command of the fire is transferred to a Type III organization.
- July 15, burned acreage is 435,569 with 95% containment. An Unmanned Aircraft System (UAS) is ordered to fly over the fire to help provide data used in the rehabilitation planning.
- July 17, Type III team transfers the Martin fire back to local agencies.
- July 21, 100% containment achieved and the Winnemucca and Elko BLM began Emergency Stabilization Rehabilitation or ESR efforts.

Elko District: Emergency Stabilization and Rehabilitation (ESR)

Resources and acres affected:

- Grazing allotments: Owyhee, Petan-Owyhee Unit and Little Owyhee (managed by Winnemucca District Office): Owyhee 36% and Petan Owyhee Unit 80%
- Infrastructure: One small historical building was burned but is still intact; fences
- Sage Grouse Habitat: PHMA 153,698 acres
- Mule Deer Habitat: Transition Range 17,733 acres
- Streams and Springs
- Noxious Weeds
- Vegetation: the majority of Elko District was a Loamy 8-10 site (R025XY019NV)
- Soils



Completed dozer line repair on Martin Fire

Fire suppression repair:

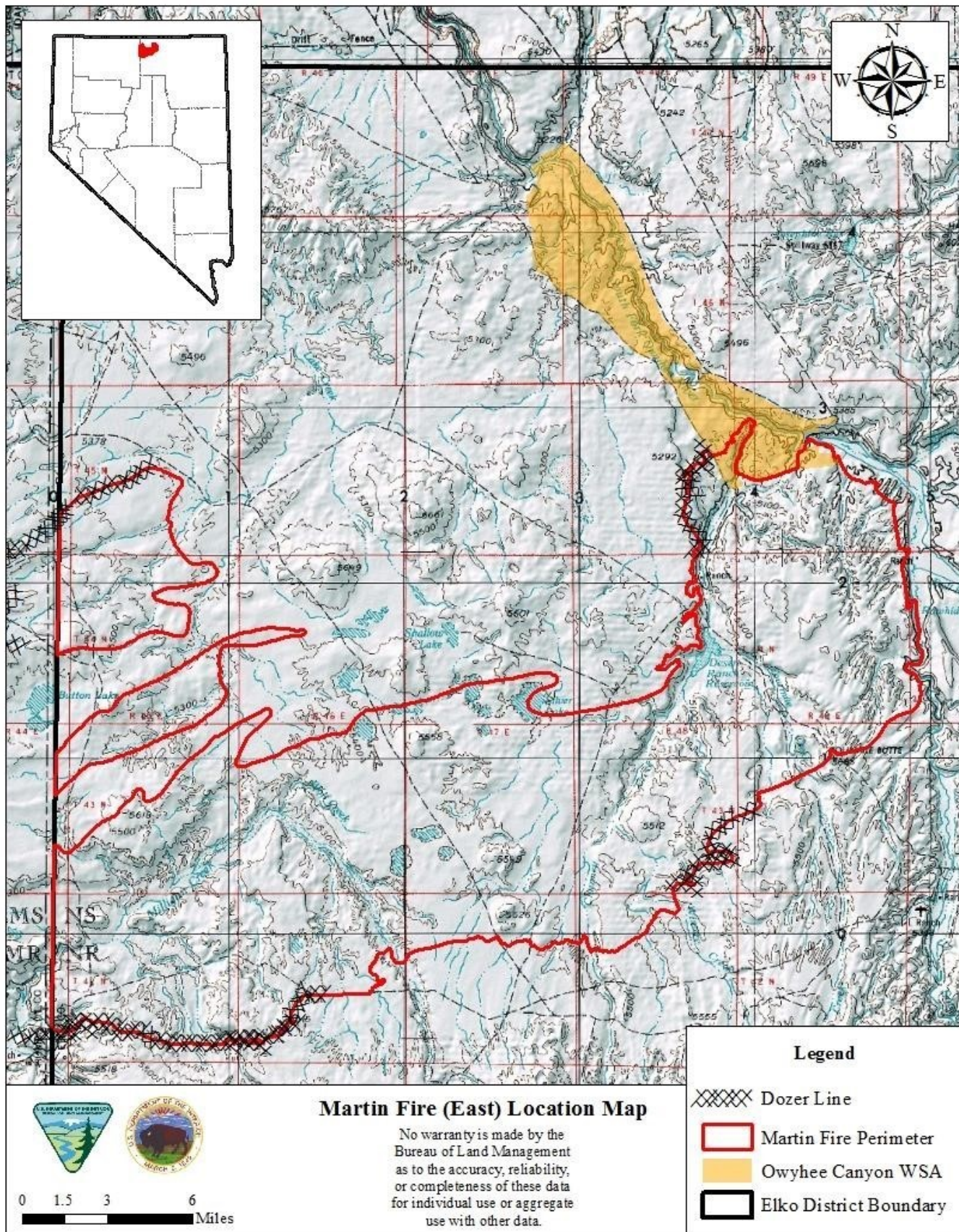
- To the best of our knowledge, all dozer line and handline was repaired
- All known fences and gates cut in the course of suppression activities were repaired

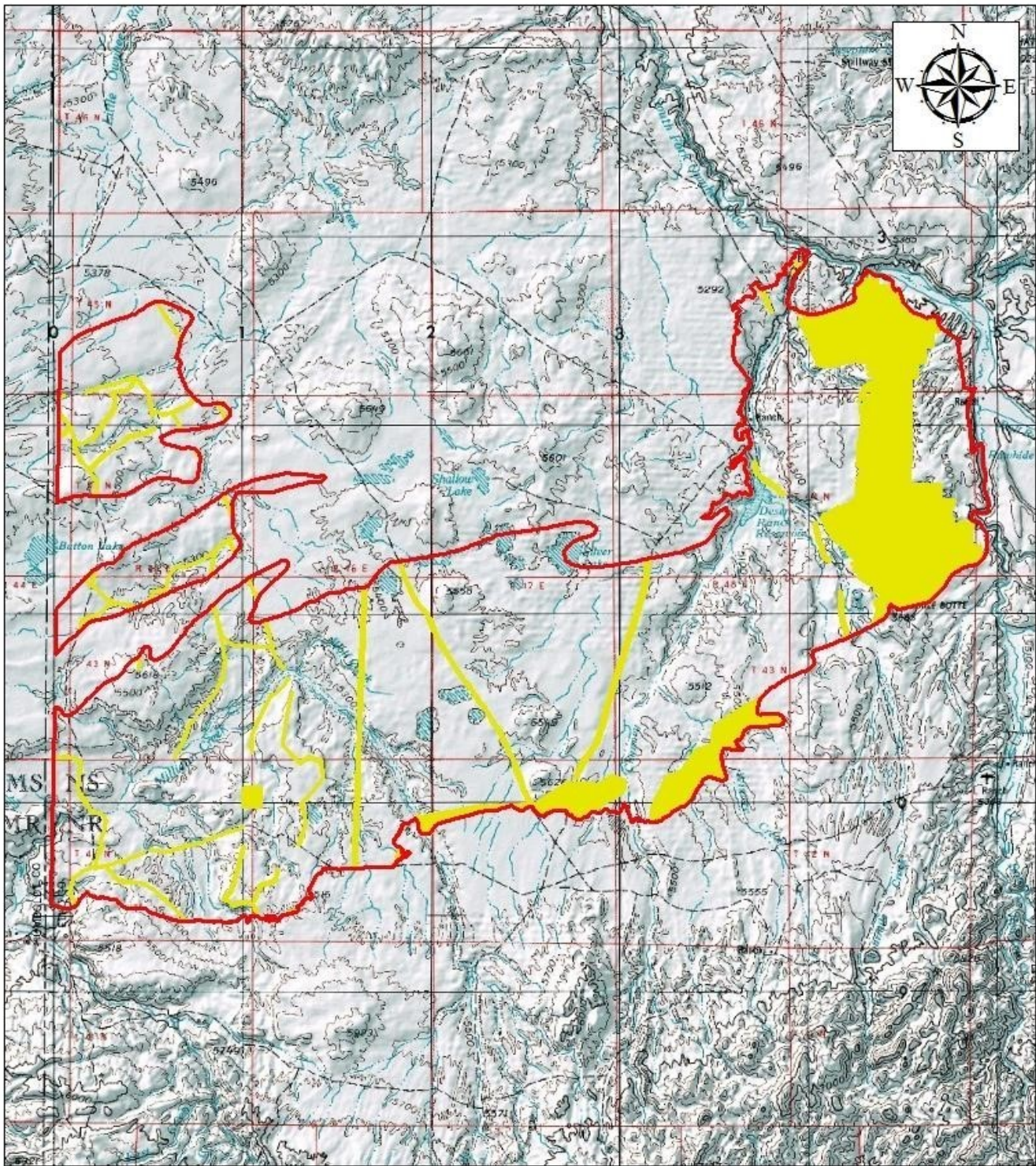
Rehabilitation recommendations from READ:

- Prioritize treatments in GRSG habitat (PHMA, GHMA) and crucial mule deer winter range
- Shrub rehabilitation
- Herbaceous treatments
- Seeded species
- Fuel treatments
- Dozer line
- Noxious Weeds



Completed dozer line repair on Martin Fire







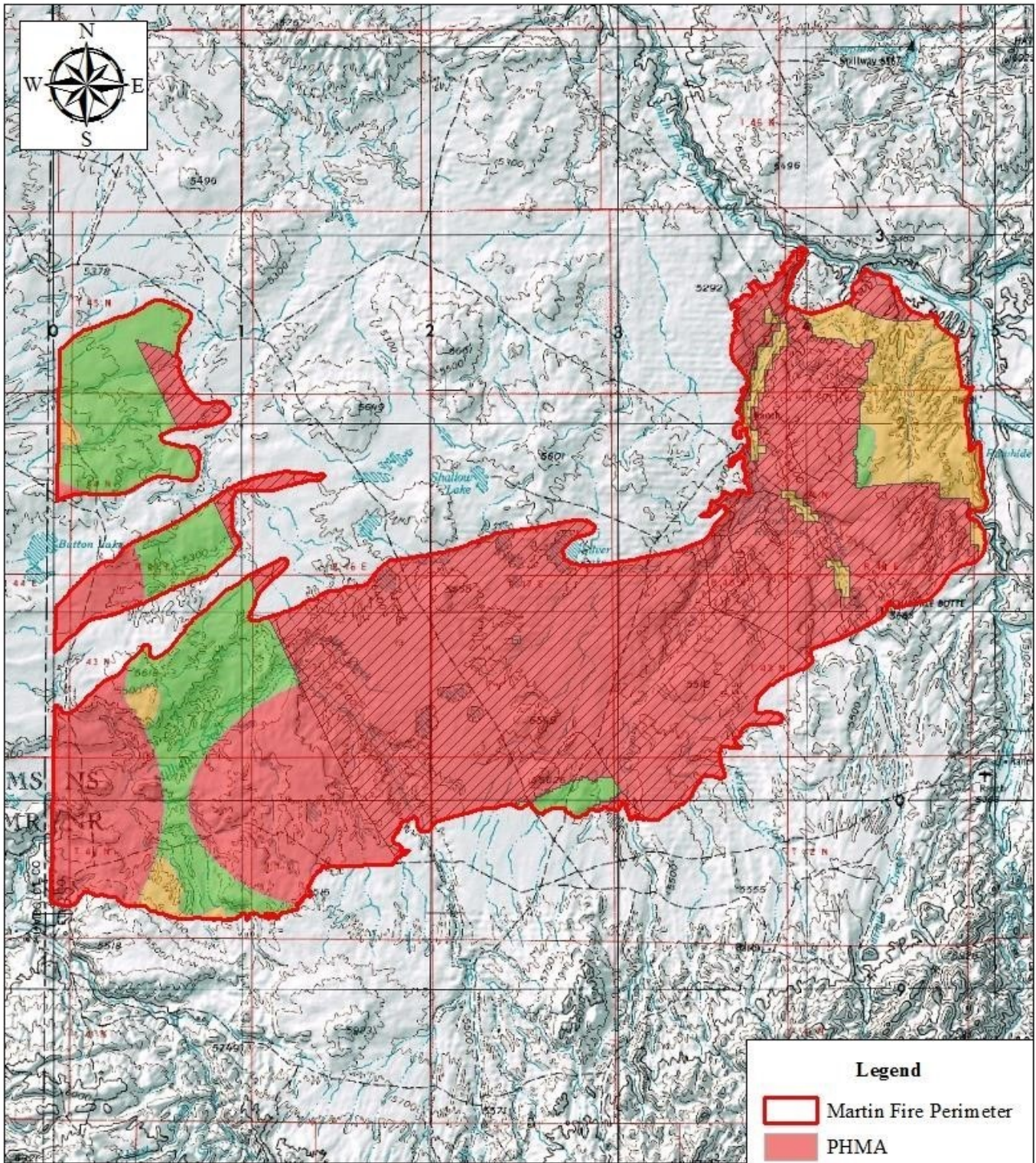
0 1.5 3 6 Miles

ESR Treatments


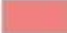


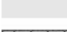
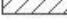
No warranty is made by the Bureau of Land Management as to the accuracy, reliability, or completeness of these data for individual use or aggregate use with other data.

Legend

-  Martin Fire Perimeter
-  Previous ESR Treatments



Legend

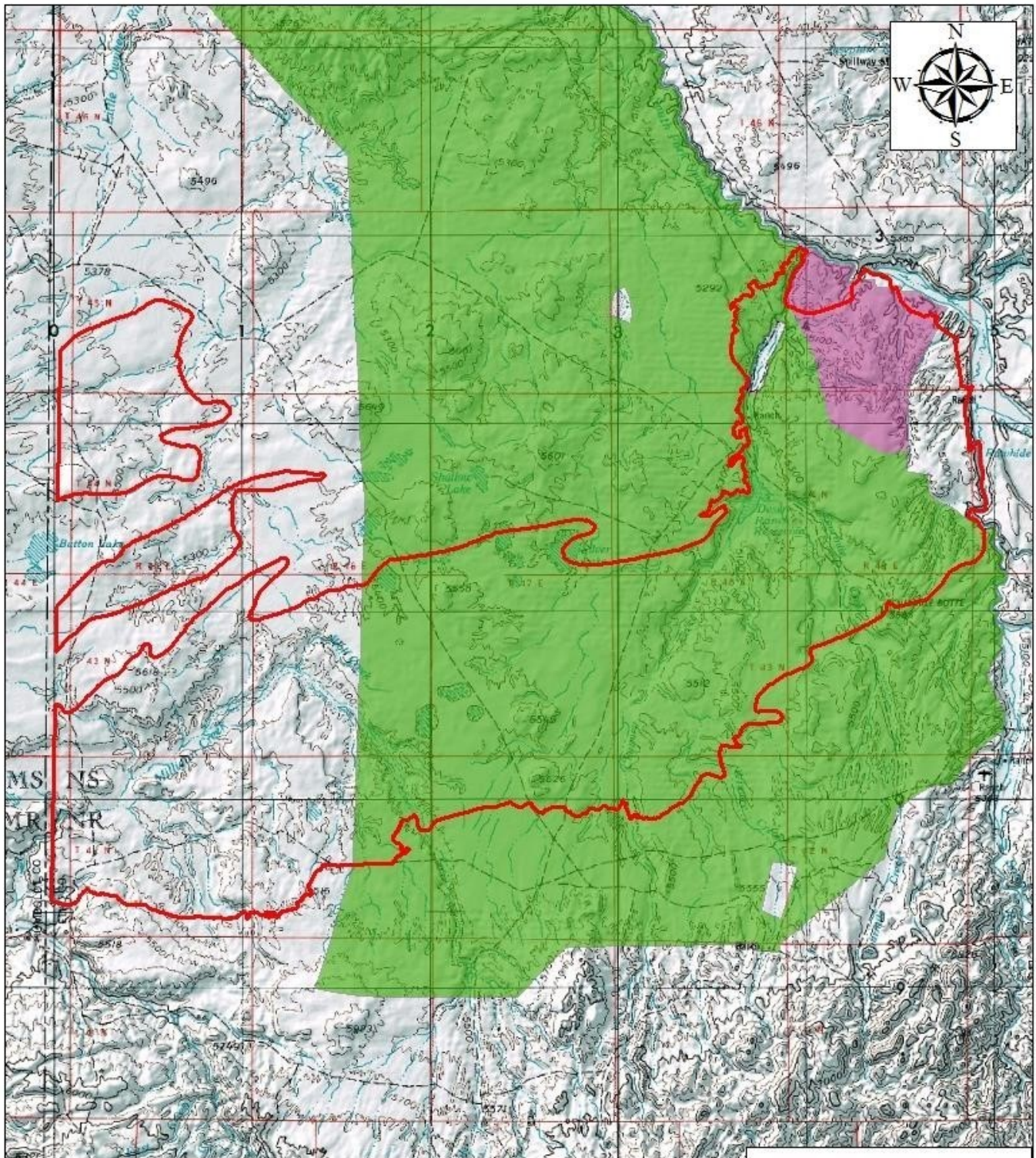
-  Martin Fire Perimeter
-  PHMA
-  OHMA
-  GHMA
-  Non-Habitat
-  Sagebrush Focal Area

Sage-Grouse Habitat

No warranty is made by the Bureau of Land Management as to the accuracy, reliability, or completeness of these data for individual use or aggregate use with other data.



0 1.5 3 6 Miles






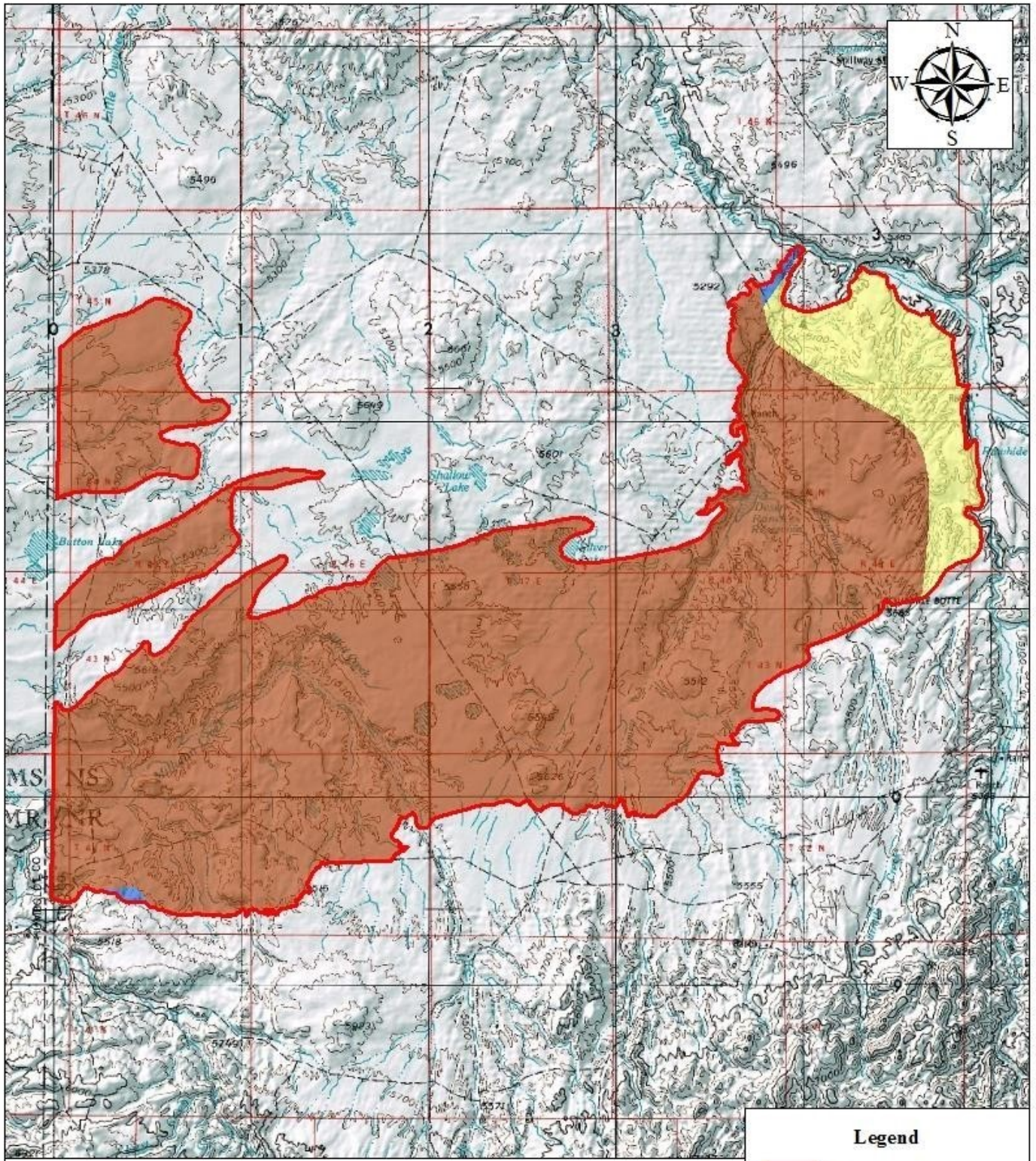
0 1.5 3 6 Miles

Allotments

No warranty is made by the Bureau of Land Management as to the accuracy, reliability, or completeness of these data for individual use or aggregate use with other data.

Legend

-  Martin Fire Perimeter
-  Owyhee
-  Petan-Owyhee Unit



0 1.5 3 6 Miles

Mule Deer Habitat

No warranty is made by the Bureau of Land Management as to the accuracy, reliability, or completeness of these data for individual use or aggregate use with other data.

Legend

- Martin Fire Perimeter
- Limited Use
- Transition Range
- Crucial Winter